

## Pine64.txt

te=0x00000000 [0,0]

Contents: [Dobrica PavlinuÅ;jiÄ 's random unstructured stuff]

- Dobrica PavlinuÅ;jiÄ 's random unstructured stuff (board and pinouts info)
- Dobrica PavlinuÅ;jiÄ 's random unstructured stuff (armbian)
- Dobrica PavlinuÅ;jiÄ 's random unstructured stuff (Links)
- Dobrica PavlinuÅ;jiÄ 's random unstructured stuff (u-boot)
- Dobrica PavlinuÅ;jiÄ 's random unstructured stuff (kernel)
  - ◆ Dobrica PavlinuÅ;jiÄ 's random unstructured stuff (serial ports)

## board and pinouts info

- <http://synfare.com/599N105E/hwdocs/pine64/index.html>

## armbian

After upgrade to armbian-next , it doesn't boot. Stop u-boot with space and boot manually:

```
# try to boot only from mmc
=> setenv bootcmd run mmc_boot
=> saveenv
Saving Environment to MMC...
Writing to MMC(0)... done

=> run mmc_boot
# this will fail, but will set some enviroment variables needed

=> setenv devtype mmc
=> setenv prefix /boot/
=> load ${devtype} 0 ${ramdisk_addr_r} ${prefix}uInitrd
4293052 bytes read in 676 ms (6.1 MiB/s)

=> load ${devtype} 0 ${kernel_addr_r} ${prefix}Image
12957704 bytes read in 1386 ms (8.9 MiB/s)

=> load ${devtype} 0 ${fdt_addr_r} ${prefix}dtb/${fdtfile}
14505 bytes read in 397 ms (35.2 KiB/s)

=> booti ${kernel_addr_r} ${ramdisk_addr_r} ${fdt_addr_r}

# fix load addresses in /boot/boot.cmd
=> setenv fdt_addr ${fdt_addr_r}
=> setenv kernel_addr ${kernel_addr_r}
=> setenv ramdisk_addr ${ramdisk_addr_r}
=> saveenv
```

fixed: boot.cmd

# Links

[http://wiki.pine64.org/index.php/Main\\_Page](http://wiki.pine64.org/index.php/Main_Page)

<http://linux-sunxi.org/Pine64>

<https://github.com/apritzel/pine64>

Debian rootfs: <https://github.com/umiddelb/z2d/tree/master/pine64>

## u-boot

<https://github.com/longsleep/build-pine64-image>

<http://forum.pine64.org/showthread.php?tid=99>

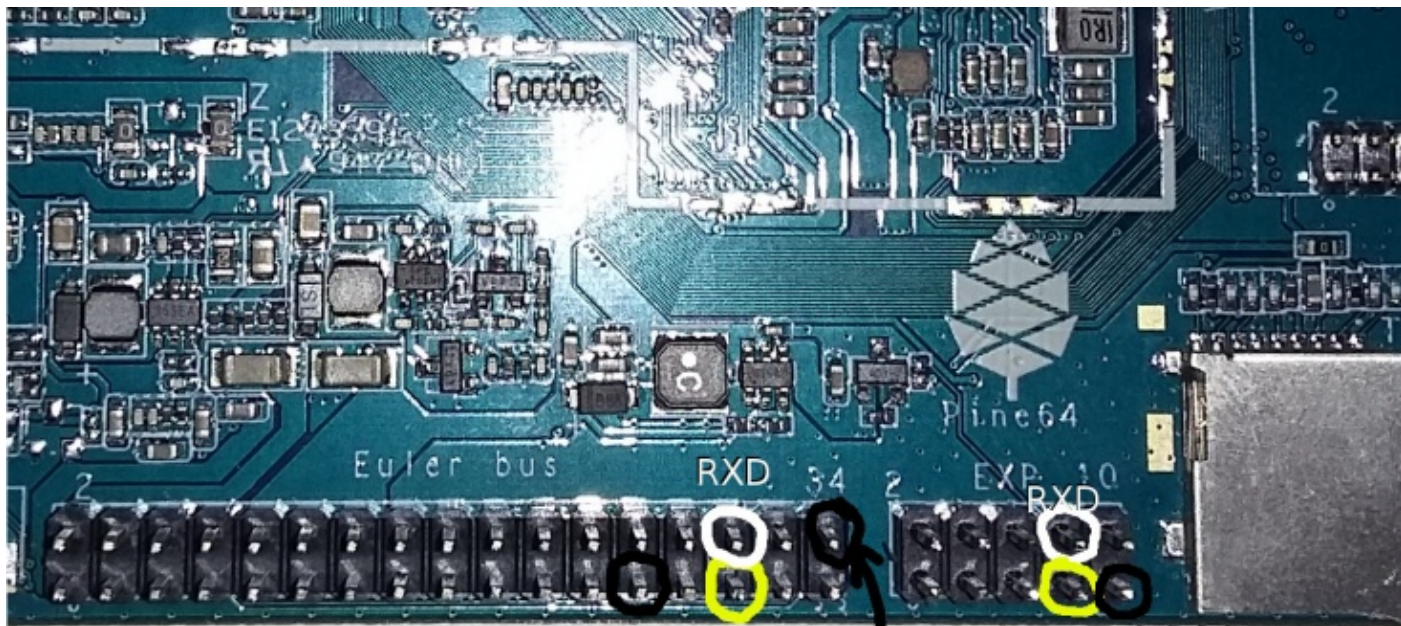
<https://www.stdin.xyz/downloads/people/longsleep/pine64-images/>

## kernel

<http://forum.pine64.org/showthread.php?tid=293>

## serial ports

- <https://github.com/longsleep/build-pine64-image/pull/11>
- update image: <http://forum.pine64.org/showthread.php?tid=99>
- from [http://linux-sunxi.org/Pine64#Serial\\_port\\_.2F\\_UART](http://linux-sunxi.org/Pine64#Serial_port_.2F_UART)



GND TXD GND TXD GND

UART0 @ 0x01c28000

TXD: PB8 = Euler 29 or EXP 7, RXD: PB9 = Euler 30 or EXP